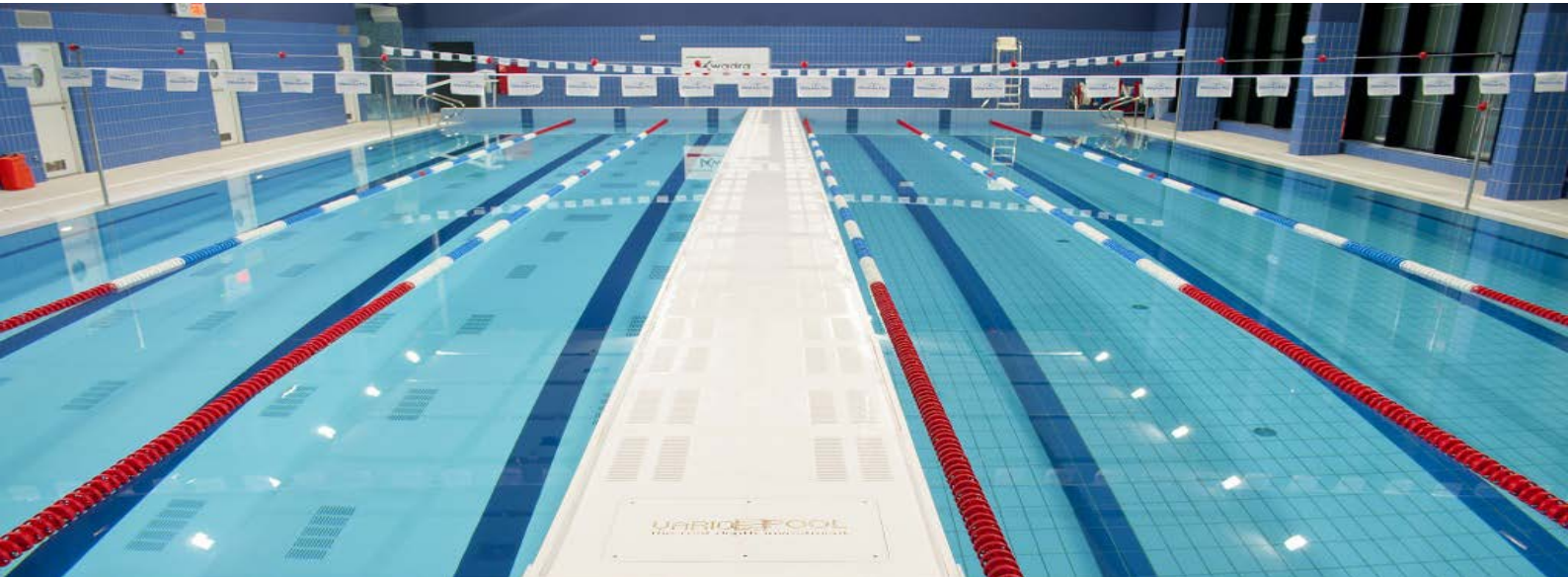


# VARIO POOL

THE REAL DEPTH INVESTMENT



## PRODUCT INFORMATION SUBMERSIBLE BULKHEAD

# PRODUCT INFORMATION

## SUBMERSIBLE BULKHEAD



### PRODUCT DESCRIPTION

A Variopool submersible or vertical bulkhead is designed to split a standard swimming pool into more than one individual spaces. The bulkhead facilitates a rapid transformation to the pool creating independent water areas to host different activities for different groups. In its lowest position the submersible bulkhead disappears completely into a recessed niche located in the bottom of the pool tank creating a completely even pool floor. The system is easily operated from pool side using a custom programmed control panel.

Once up in position, the locked bulkhead creates a solid partition closing off the area from the pool base to above water level so various activities can take place simultaneously. The bulkhead face panels are slotted so that it does not interfere with the proper circulation of the water.

The standard submersible bulkhead is based on a buoyant system which can be raised or lowered with the aid of a hydraulic cylinder pulling on stainless steel cables. The steel cables attached to the bulkhead frame are directly connected to the cylinder by way of a self-lubricating pulley system eliminating any chance of contamination to the pool water. This buoyant system is a proven concept characterized by its simplicity and a minimum of moving parts resulting in a high level of reliability and lower maintenance costs.

Variopool submersible bulkheads are suitable for professional use and are fully compliant with the minimum requirements set by the FINA as well as European Norm EN13451-11.

### TECHNICAL SPECIFICATIONS

<b>Material - construction</b>	Pickled and passivated Stainless Steel 316L frame construction
<b>Material - finish</b>	Slotted 20 mm thick Polypropylene panels with a non-slip surface
<b>Colour</b>	White (RAL 9010)
<b>Buoyancy</b>	Max. 200 kg/m <sup>2</sup>
<b>Material - cables</b>	Dual Stainless Steel 316L twisted cables (individually certified)
<b>Guide channels</b>	Two (2) Stainless Steel channels incorporated into the pool walls
<b>Actuating system</b>	Hydraulic cylinder(s)
<b>Speed</b>	250 – 330 mm/min.
<b>Controls</b>	PLC technology with programmable software

### CONVENIENCE AND SAFETY FEATURES

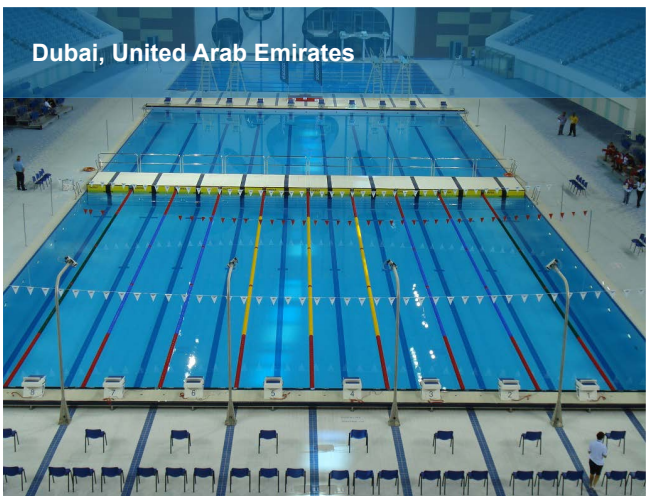
The submersible bulkhead has a standard base model which can be equipped with additional convenience features:

- Standard • Lockable control panel with custom Touch Screen and emergency button
- Standard • Internet connection cat. 6 for immediate remote maintenance access
- Standard • Warning light and sounder
- Standard • Finger grips on top edge and integrated anchors for swimming lane ropes
- Standard • Two access hatches for maintenance
- Standard • Competition racing lines in colours blue (RAL5013) or black (RAL9005)
- Optional • Integrated connections for competition timing equipment (Omega et al.)
- Optional • Foundations for starter blocks and/or integrated foot ledge
- Optional • Removable mirror-polished hand rails
- Optioneel • Intergrated foundations for startingblocks and foot ledge

## REFERENTIES

Below is a short list of references where Variopool has designed and installed a submersible bulkhead. Feel free to contact us should you have questions about these or any other Variopool product by calling +31 226 333 000 or email via [info@variopool.nl](mailto:info@variopool.nl).

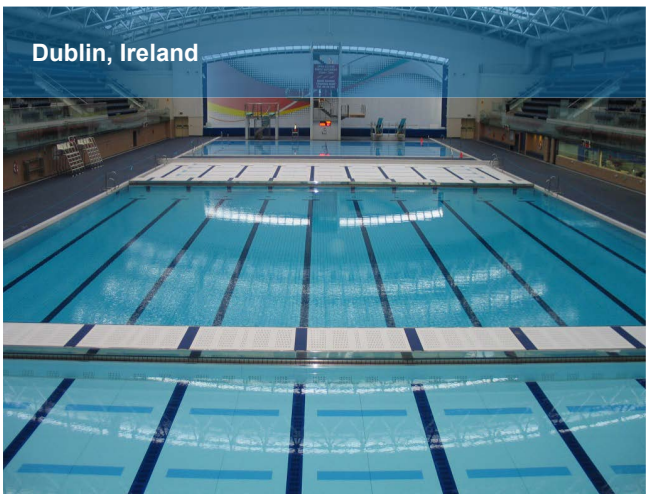
Dubai, United Arab Emirates



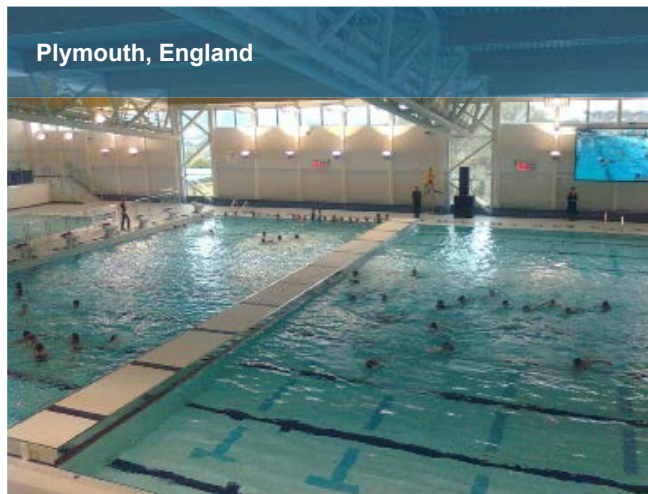
Sheffield, England



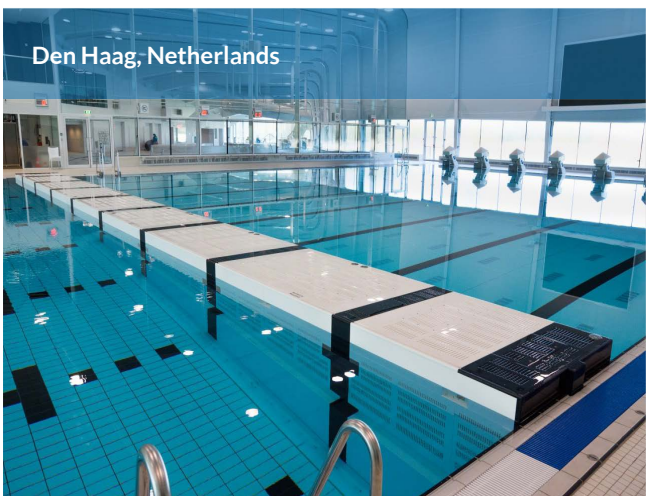
Dublin, Ireland



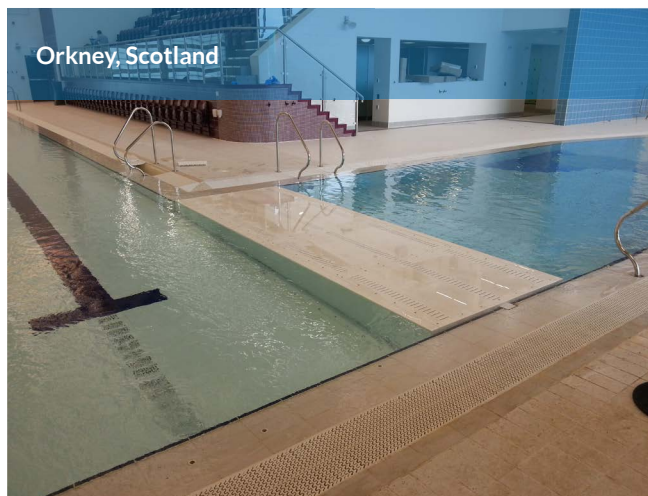
Plymouth, England



Den Haag, Netherlands



Orkney, Scotland



## MORE INFORMATION

Variopool B.V. - Haarspit 3 - 1724 BG Oudkarspel - Netherlands  
Tel. +31 226 333 000 - E-mail: [info@variopool.nl](mailto:info@variopool.nl) - Web: [www.variopool.nl](http://www.variopool.nl)